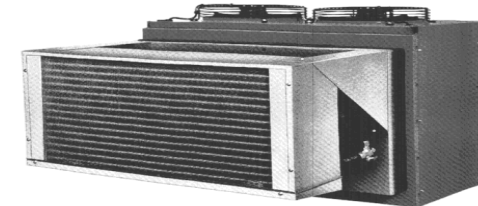
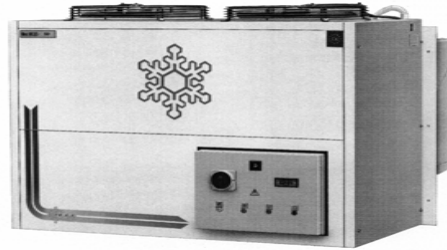


MONOBLOCCO A TAMPONE CON COMPRESSORE ERMETICO SERIE " PAD "
MONOBLOC UNIT WALL INSTALLATION HERMETIC COMPRESSOR SERIE " PAD "
MONOBLOC A' PAROI AVEC COMPRESSEUR HERMETIQUE SERIE "PAD "

RESE CALCOLATE PER GAS R 404-A NORMALE TEMPERATURA
CAPACITY CALCULATED FOR GAS R 404 A CHILLER TEMPERATURE
CAPACITE' CALCULE' POUR GAZ R 404A MOYENNE TEMPERATURE

EVAPORATORE CON ESPANSIONE A VALVOLA TERMOSTATICA
THERMOSTATIC VALVE EXPANSION EVAPORATOR
EVAPORATEUR AVEC EXPANSION A' VANNE THERMOSTATIQUE



| CODE | COMPRESSORS | | | CAPACITY WATT Ta =+40°C | | VENTILATORI | | DIMENSIONI COLD ROOM | | DIMENSIONI EVAPOR. EVAPORATOR SIZE | | | DIMENSIONE FORO HOLE DIMENSION | | DIMENSION MONOBLOC UNIT | | | TENSIONE TENSION | PESO NET | LISTINO PREZZI PRICE LIST | IMBALLO PACKING |
|-----------|-------------|-----|------------|----------------------------|-------|----------------------|------------------------|-------------------------|------|---------------------------------------|----|----|-----------------------------------|----|----------------------------|-----|----|---------------------|---------------|------------------------------|--------------------|
| | MODEL | HP | ASS. KW | Te = | | EVAPOR. N° x diam | CONDENS.. N° x diam | M3 | | l | p | h | L | H | L | P | H | VOLT/N/T | WEIGHT KG. | PRIX COURANT EURO | EMBALLAGE EURO |
| | U. H. | | | -5°C | -10°C | | | +5°C | -0°C | | | | | | | | | | | | |
| PMEV-N 15 | CAJ 9519 J | 1,5 | 1,25 | 3240 | 2730 | 2 x 300 | 2 x 300 | 40 | 28 | 62 | 26 | 31 | 86 | 53 | 90 | 108 | 75 | 400.3.50 | 140 | | |
| PMEV-N 20 | TFH 4531 Z | 2 | 1,95 | 5090 | 4420 | 2 x 300 | 2 x 300 | 64 | 43 | 82 | 45 | 50 | 86 | 53 | 90 | 108 | 75 | 400.3.50 | 155 | | |
| PMEV-N 30 | TFH 4540 Z | 3 | 2,85 | 5980 | 5010 | 2 x 300 | 2 x 300 | 75 | 26 | 82 | 45 | 50 | 86 | 53 | 90 | 108 | 75 | 400.3.50 | 180 | | |
| PMEV-N 40 | TAG 4561 Z | 4 | 3,95 | 8050 | 6250 | 2 X 400 | 2 x 400 | 107 | 69 | 106 | 55 | 62 | 108 | 65 | 115 | 126 | 90 | 400.3.50 | 205 | | |
| PMEV-N 50 | TAG 4573 Z | 5 | 4,65 | 10710 | 8880 | 2 X 400 | 2 x 400 | 135 | 110 | 106 | 55 | 62 | 108 | 65 | 115 | 126 | 90 | 400.3.50 | 225 | | |
| PMEV-N 75 | MT- 80 | 7,5 | 6,45 | 11550 | 9900 | 2 X 400 | 2 x 400 | 155 | 133 | 106 | 55 | 62 | 108 | 65 | 115 | 126 | 90 | 400.3.50 | 260 | | |

IL MONOBLOCCO E' COMPOSTO DA:

TELAIO AUTOPORTANTE VERNICIATO BIANCO RAL
CONDENSATORE TROPICALIZZATO, COMPRESSORE
ERMETICO, RICEVITORE DI LIQUIDO, FILTRO DEIDRATORE,
SOLENOIDE LIQUIDO, SOLENOIDE SBRINAMENTO A GAS CALDO,
PRESSOSTATO DI ALTA/BASSA PRESSIONE, VALVOLA TERMOSTATICA,
QUADRO POTENZA CON TERMOSTATO DIGITALE, CARICATI CON GAS
ECOLOGICO, IMBALLO IN CARTONE PALETTIZZATO AL COSTO.

SU RICHIESTA:

PER COMPONENTI SUPPLEMENTARI CONTATTARE IL NOSTRO
UFFICIO COMMERCIALE.

THE MONOBLOC IS EQUIPPED WITH

PAINTED STEEL FRAME, TROPICAL CONDENSER, HERMETIC
COMPRESSOR, LIQUID RECEIVER, DEHYDRATOR FILTER,
LIQUID SOLENOID VALVE, HOT GAS DEFROSTING SOLENOID
VALVE, H/L PRESSOSTAT, THERMOSTATIC VALVE, CONTROL
PANEL WITH DIGITAL THERMOSTAT, CHARGED WITH ECOLOGICAL
GAS, CARDBOARD PACKING AT COST

ON REQUEST:

FOR EXTRA COMPONENTS PLEASE CONTACT OUR
SALES OFFICE.

LE MONOBLOC EST COMPOSE' AVEC:

CHASSIS EN TOLE VERNIE BLANCHE RAL, CONDENSATEUR TROPI-
CALISE', COMPRESSEUR HERMETIQUE, BOUTEILLE DE LI-
QUIDE, VANNE POUR DEGIVRAGE A' GAZ CHAUDE, FILTRE DESY-
DRATEUR, H/B PRESSOSTAT, THERMOSTATIC SOUPAPE, ARMOIRE
DE PUISSANCE AVEC THERMOSTAT DIGITAL, CHARGE' DE GAZ
ECOLOGIQUE, EMBALLAGE EN CARTON EXCLU DE PRIX

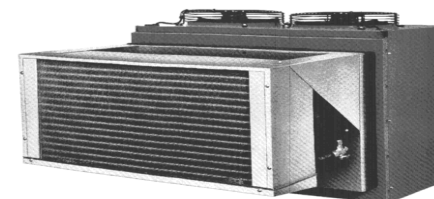
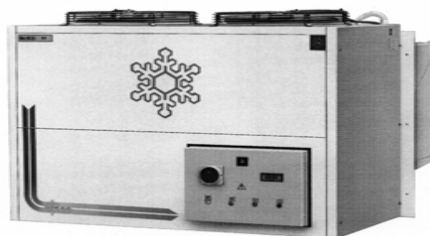
SUR DEMANDE

POUR ULTERIEURES COMPOSANTES SVP CONTACTE'
NOTRE BUREAU COMMERCIAL

MONOBLOCCO A TAMPONE CON COMPRESSORE ERMETICO SERIE " PAD "
MONOBLOC UNIT WALL INSTALLATION HERMETIC COMPRESSOR SERIE " PAD "
MONOBLOC A' PAROI AVEC COMPRESSEUR HERMETIQUE SERIE "PAD "

RESE CALCOLATE PER GAS R 404-A BASSA TEMPERATURA
CAPACITY CALCULATED FOR GAS R 404 A LOW TEMPERATURE
CAPACITE' CALCULE' POUR GAZ R 404A BASSE TEMPERATURE

EVAPORATORE CON ESPANSIONE A VALVOLA TERMOSTATICA
THERMOSTATIC VALVE EXPANSION EVAPORATOR
EVAPORATEUR AVEC EXPANSION A' VANNE THERMOSTATIQUE



| CODE | COMPRESSORS | | | CAPACITY WATT Ta =+40°C Te = | | | VENTILATORI FANS | | DIMENSIONI COLD ROOM M3 -20°C -25°C | | DIMENSIONI EVAPOR. EVAPORATOR SIZE | | | DIMENSIONE FORO HOLE DIMENSION | | DIMENSION MONOBLOC UNIT | | | TENSIONE TENSION VOLT/N/T | PESO NET WEIGHT KG. | LISTINO PREZZI PRICE LIST PRIX COURANT EURO | IMBALLO PACKING EMBALLAGE EURO |
|------------|-------------|-----|------------|------------------------------------|-------|-------|----------------------|------------------------|--|-----|---------------------------------------|-----|-----|-----------------------------------|-----|----------------------------|----------|-----|---------------------------------|------------------------------|--|---|
| | MODEL | HP | ASS. KW | -25°C | -30°C | -35°C | EVAPOR. N° x diam | CONDENS.. N° x diam | l | p | h | L | H | L | P | H | VOLT/N/T | KG. | EURO | EURO | | |
| | U. H. | | | | | | | cm. | cm. | cm. | cm. | cm. | cm. | cm. | cm. | | | | | | | |
| PMEV-B 25 | TFH 2511 Z | 3 | 2,45 | 2150 | 1628 | 1233 | 2 x 300 | 2 x 300 | 14 | 9 | 82 | 45 | 50 | 86 | 53 | 90 | 108 | 75 | 400.3.50 | 140 | | |
| PMEV-B 30 | TFH 2511 Z | 3 | 2,45 | 2892 | 2105 | 1520 | 2 x 300 | 2 x 300 | 22 | 13 | 82 | 45 | 50 | 86 | 53 | 90 | 108 | 75 | 400.3.50 | 180 | | |
| PMEV-B 40 | TAG 2516 Z | 4 | 3,35 | 4430 | 3327 | 2448 | 2 X 300 | 2 x 300 | 39 | 24 | 82 | 45 | 50 | 86 | 53 | 90 | 108 | 75 | 400.3.50 | 205 | | |
| PMEV-B 50 | TAG 2522 Z | 5 | 4,25 | 5640 | 4118 | 2997 | 2 X 400 | 2 x 400 | 57 | 34 | 106 | 55 | 62 | 108 | 65 | 115 | 126 | 90 | 400.3.50 | 225 | | |
| PMEV-B 75 | LTZ 100 | 6,5 | 5,90 | 8990 | 5600 | 3850 | 2 X 400 | 2 x 400 | 70 | 42 | 106 | 55 | 62 | 108 | 65 | 115 | 126 | 90 | 400.3.50 | 260 | | |
| PMEV-B 100 | TAGD 2544 Z | 10 | 8,25 | 10270 | 7570 | 5750 | 2 X 500 | 2 x 500 | 95 | 66 | 148 | 92 | 87 | 151 | 91 | 170 | 198 | 127 | 400.3.50 | 330 | | |

IL MONOBLOCCO E' COMPOSTO DA:

TELAIO AUTOPORTANTE VERNICIATO BIANCO RAL
 CONDENSATORE TROPICALIZZATO, COMPRESSORE
 ERMETICO, RICEVITORE DI LIQUIDO, FILTRO DEIDRATORE,
 SOLENOIDE LIQUIDO, SOLENOIDE SBRINAMENTO A GAS CALDO,
 PRESSOSTATO DI ALTA/BASSA PRESSIONE, VALVOLA TERMOSTATICA,
 QUADRO POTENZA CON TERMOSTATO DIGITALE, CARICATI CON GAS
 ECOLOGICO, IMBALLO IN CARTONE PALETTIZZATO AL COSTO.

SU RICHIESTA:

PER COMPONENTI SUPPLEMENTARI CONTATTARE IL NOSTRO
 UFFICIO COMMERCIALE.

THE MONOBLOC IS EQUIPPED WITH

PAINTED STEEL FRAME, TROPICAL CONDENSER, HERMETIC
 COMPRESSOR, LIQUID RECEIVER, DEHYDRATOR FILTER, LIQUIDO SO-
 LENOID VALVE, H/B PRESSOSTAT, THERMOSTATIC VALVE,
 HOT GAS DEFROSTING SOLENOID VALVE, CONTROL PANEL
 WITH DIGITAL THERMOSTAT, CHARGED WITH ECOLOGICAL GAS,
 CARDBOARD PACKING AT COST

ON REQUEST:

FOR EXTRA COMPONENTS PLEASE CONTACT OUR
 SALES OFFICE.

LE MONOBLOC EST COMPOSE' AVEC:

CHASSIS EN TOLE VERNIE BLANCHE RAL, CONDENSATEUR TROPIC-
 CALISE', COMPRESSEUR HERMETIQUE, BOUTEILLE DE LIQUIDE,
 FILTRE DESYDRATEUR, SOLENOIDE SOUPAPE, H/B PRESSOSTAT,
 THERMOSTATIC SOUPAPE, SOUPAPE POUR DEGIVRAGE A' GAZ CHAUDE,
 ARMOIRE DE PUISSANCE AVEC THERMOSTAT DIGITAL, CHARGE' AVEC
 GAZ ECOLOGIQUE, EMBALLAGE EN CARTON EXCLU DE PRIA

SUR DEMANDE

POUR ULTERIEURES COMPOSANTES SVP CONTACTE'
 NOTRE BUREAU COMMERCIAL